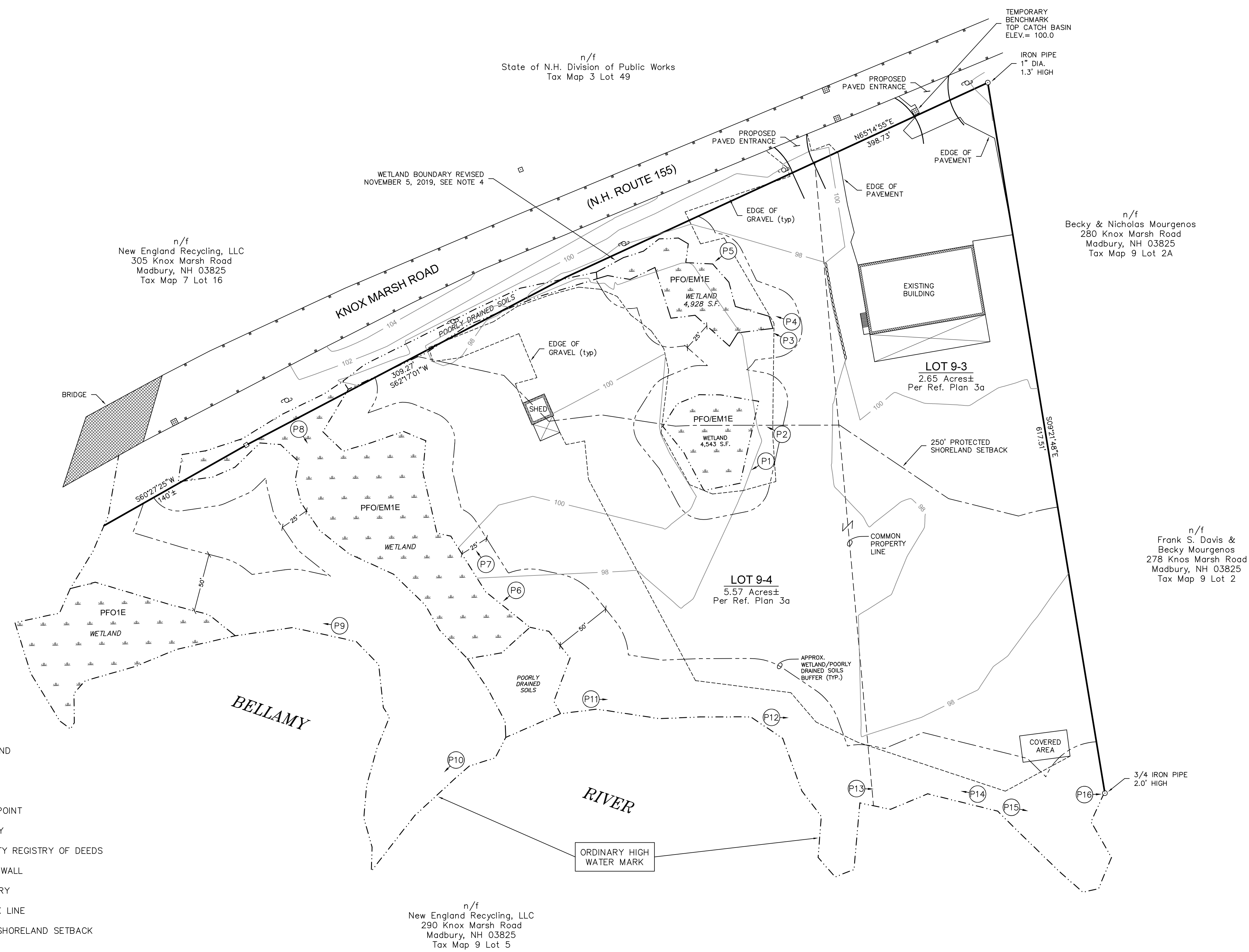


LOCATION PLAN



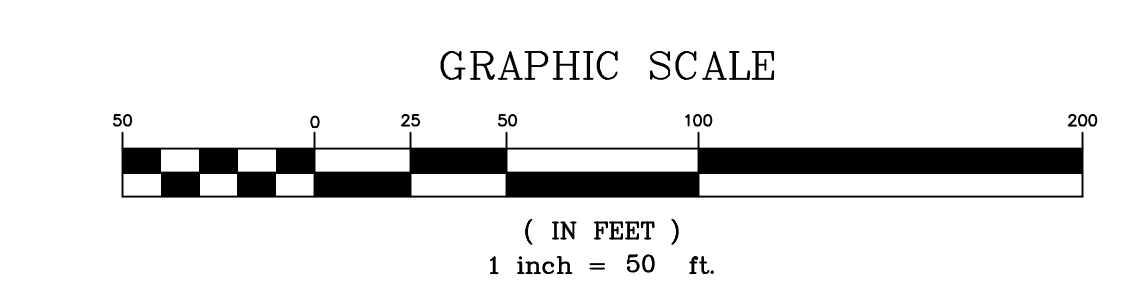
LEGEND

- FOUND IRON PIPE
- FOUND NHHB BOUND
- ▣ CATCH BASIN
- ⊕ UTILITY POLE
- ⊙ P1 PHOTO VANTAGE POINT
- n/f NOW OR FORMERLY
- S.C.R.D. STRAFFORD COUNTY REGISTRY OF DEEDS
- STONE RETAINING WALL
- - - WETLAND BOUNDARY
- - - WETLAND SETBACK LINE
- - - 250' PROTECTED SHORELAND SETBACK
- 102 2' CONTOUR LINE

NOTES

1. RANDOM TRAVERSE ERROR OF CLOSURE IS LESS THAN 1 PART IN 10,000.
2. OWNER OF RECORD:  
 CHARLES STREET HOLDING LLC      284 KNOX MARSH LLC  
 282 KNOX MARSH ROAD              284 KNOX MARSH ROAD  
 MADBURY, NH 03820              AND      MADBURY, NH 03820  
 TAX MAP 9, LOT 3                      TAX MAP 9, LOT 4  
 BK. 2166, PG. 577 S.C.R.D.
3. REFERENCE PLANS:
  - a) "PLAN OF WELL RADIUS EASEMENT—FRANK S. & BETTY L. DAVIS TO BEVERLEY A. & BARTLETT N. WYMAN—ROUTE 155 KNOX MARSH ROAD, MADBURY, NEW HAMPSHIRE" BY AMBIT SURVEY DATED JANUARY, 1993. S.C.R.D. PLAN No. 41A-9.
  - b) "PLAN OF SUBDIVISION FOR FRANK S. & BETTY L. DAVIS—N.H. ROUTE 155 DOVER, NEW HAMPSHIRE" BY K.E. MOORE & B.G. STAPLES DATED MAY, 1987 S.C.R.D. PLAN No. 31-110.
4. JURISDICTIONAL WETLANDS AND ORDINARY HIGH WATER MARK WERE DELINEATED ON MAY 4, 2012 BY STABLE GROWTH ENVIRONMENTAL LLC. JURISDICTIONAL WETLAND BOUNDARIES WERE REVIEWED AND CONFIRMED ON JULY 12 AND NOVEMBER 5, 2019 WITH SLIGHT REVISIONS MADE BY STABLE GROWTH ENVIRONMENTAL LLC IN THE AREA NOTED ON THE PLAN. ORDINARY HIGH WATER WAS REVIEWED AND CONFIRMED ON DEC. 23, 2019.

ISSUE	DATE	DESCRIPTION	BY	CHKD.	APP.



**ATLANTIC**  
SURVEY CO, LLC

25 Nute Road, Dover, New Hampshire 03820

PREPARED BY:  
SURVEYORS  
PLANNERS  
SEPTIC DESIGNERS

603-659-8939

DATE:	Feb., 2020
FIELDWORK BY:	AF
DESIGNED BY:	AF
CAD FILE:	19104
PROJECT No.:	19104
SHEET	1 OF 1

**SITE PLAN of LAND**  
PREPARED FOR  
**LandCare Associates, Inc.**  
LOCATED AT  
**Route 155, Madbury, New Hampshire**